



Tyrolean Chalet

400 East Meadow Drive, Vail, CO 81657

Vail, CO

Project Costs:
\$6,000,000

Project Size:
5,464 Square Feet

Features:
4 bedroom, 5 1/2 bath
Media room
Exercise room
Wine Cellar
Vaulted Ceilings
Large Great room
Slifer Designs® Finishes

► **Description:** In 2004, Timberline Commercial Real Estate purchased the former Tyrolean Restaurant from its original owner and operator. The purpose of the acquisition was to re-zone the property for residential use and develop a single luxury condominium unit.

The Tyrolean Chalet, as it is now known, is a 5,464 residential unit with a unique location on the banks of Gore Creek. in Vail Village. This location affords beautiful views of Vail Mountain from the unit's multiple living terraces. At the time of completion, the Tyrolean Chalet was the largest single condominium unit within the Town of Vail.

The unit includes 4-bedrooms, 5 1/2 baths, a media room, exercise room, wine cellar, vaulted ceilings, a larger great room and 3 underground parking spaces.



**Timberline's
Role:**

Purchased former Tyrolean Restaurant

Rezoned building to be used as a residential space

Redeveloped as luxury condominium unit

Timberline Commercial Real Estate

12 Vail Road
Suite 600
Vail, CO 81657

18800 Von Karman Avenue
Suite 100
Irvine, CA 92612

Phone: 970.476.3436

Fax: 970.476.1986

E-mail: info@timberlinere.com

Phone: 949.474.2088

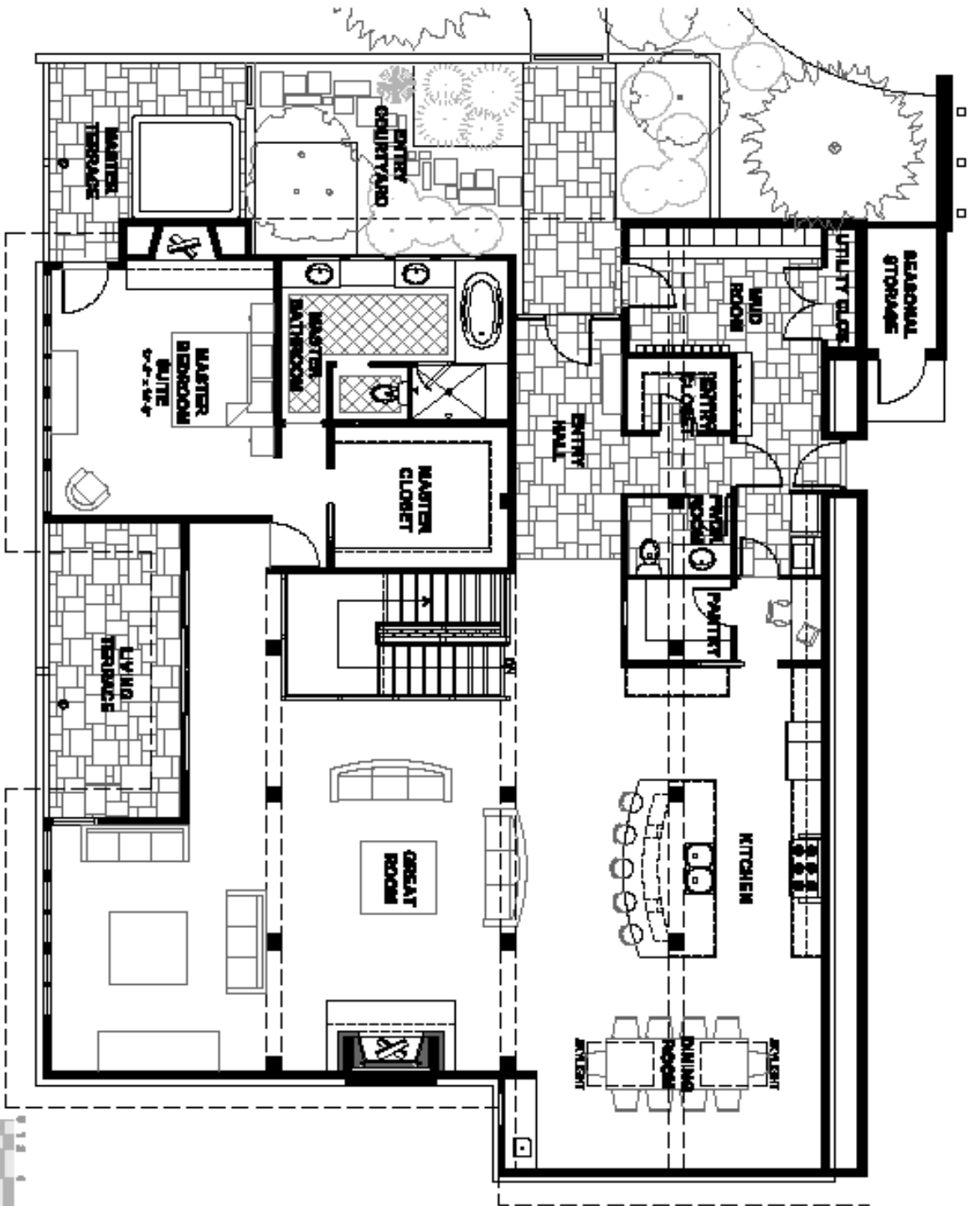
Fax: 949.474.8258

E-Mail: info@timberlinere.com

Tyrolean Chalet Floor Plans

TYROLEAN CHALET MAIN LEVEL FLOOR PLAN

GOOSE CREEK &
VAL MOUNTAIN VIEW



Note: All dimensions are approximate. Final specifications and materials are subject to architect and other reviewers of the final decision of the developer.

SUMAN
ARCHITECT

113 Sun Shadow Drive
Suite 200
Val, CO 81157

skandforarchitect.com
970.675.2900
970.675.2901
M 970.675.0122